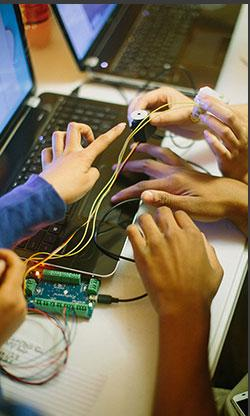


# remake learning



The world is changing.  
Education needs to change with it.  
<<Insert Your Community>>  
can lead the way.



Presented By:  
<<Insert Your Name>>  
<<Insert Presentation Date>>

# THE WORLD IS CHANGING. EDUCATION NEEDS TO CHANGE WITH IT.

---

Learning happens everywhere, all the time

---

Modern technology has had a dramatic impact  
on how young people learn and pursue their interests

---

We need a new model for learning  
that fits the realities of the digital age



REMAKELEARNING.ORG

# WHAT DOES THIS MEAN FOR BUSINESSES?

---

For companies developing products and services for teaching and learning, we can partner with our community to make sure those products serve real need

---

As employers, we can invest in an approach to learning to prepares youth to thrive as the workforce of the innovation economy





# WHAT DOES THIS MEAN FOR <<INSERT YOUR COMMUNITY>>?

---

<<Describe specific challenges and opportunities facing  
your community>>

# WHAT IS BEING DONE?

---

No one institution can overcome these challenges alone

---

Across the country, educators and innovators are developing new & innovative approaches to learning  
Reimagining where and how learning happens



REMAKELEARNING.ORG

# CARNEGIE MELLON UNIVERSITY

Bridging the community  
& higher education

---

Unleashing the resources of a major research  
university for the benefit of local communities

---

CREATE Lab helps educators and students  
make the most of high-tech research and  
development

---

Entertainment Technology Center partners  
with schools, museums, and libraries to  
design immersive learning environments



remake  
learning

REMAKELEARNING.ORG



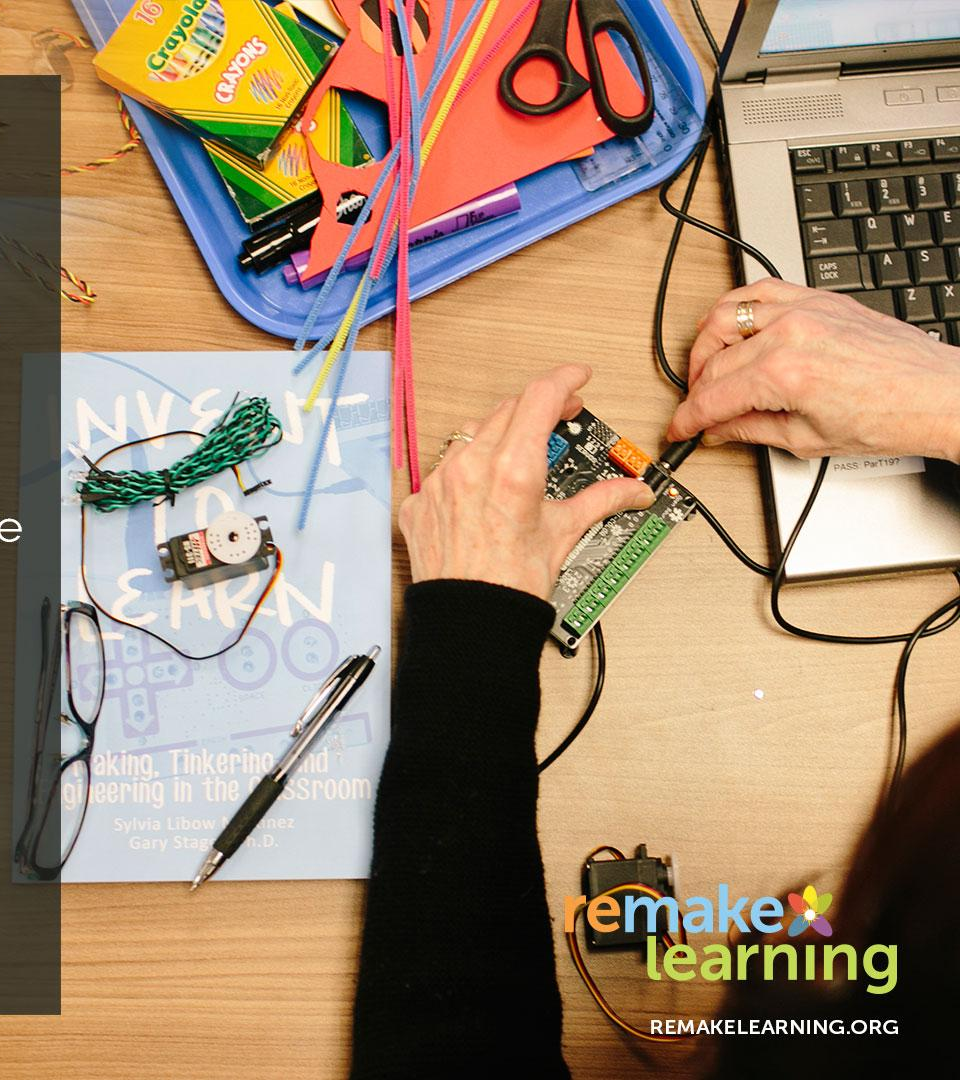
# BIRDBRAIN TECHNOLOGIES

Developing Ed-Tech that learns  
along side students & teachers

Simple yet powerful robotics kits  
makes computer science approachable  
(and affordable)

Co-designed from the beginning  
with teacher and student input

Lesson plans developed and shared  
by online community of educators  
from across the country





# transformED

A digital playground  
for teachers

Creating a safe space for teachers  
to try new instructional techniques,  
test tech tools, and learn from one  
another

Helping teachers develop basic tech  
skills and step outside their comfort  
zones with more advance practices

Making professional development  
a hands-on, practical, and relevant  
experience



remake  
learning

REMAKELEARNING.ORG



# ELIZABETH FORWARD SCHOOL DISTRICT

Transforming a school district,  
one classroom at a time

---

Rethinking the use of space  
and the use of budgets

---

Breaking down the walls  
between shop class, art studio,  
and computer lab

---

Reducing drop-outs to zero,  
climbing test scores, skyrocketing  
enrollment in summer enrichment



remake   
learning

REMAKELEARNING.ORG

# HOW DOES SO MUCH INNOVATION EMERGE IN ONE CITY?



---

It takes a network of people  
working together across sectors

---

Making learning the whole community's responsibility

---

Creating an environment that nurtures professional  
collaboration and creativity





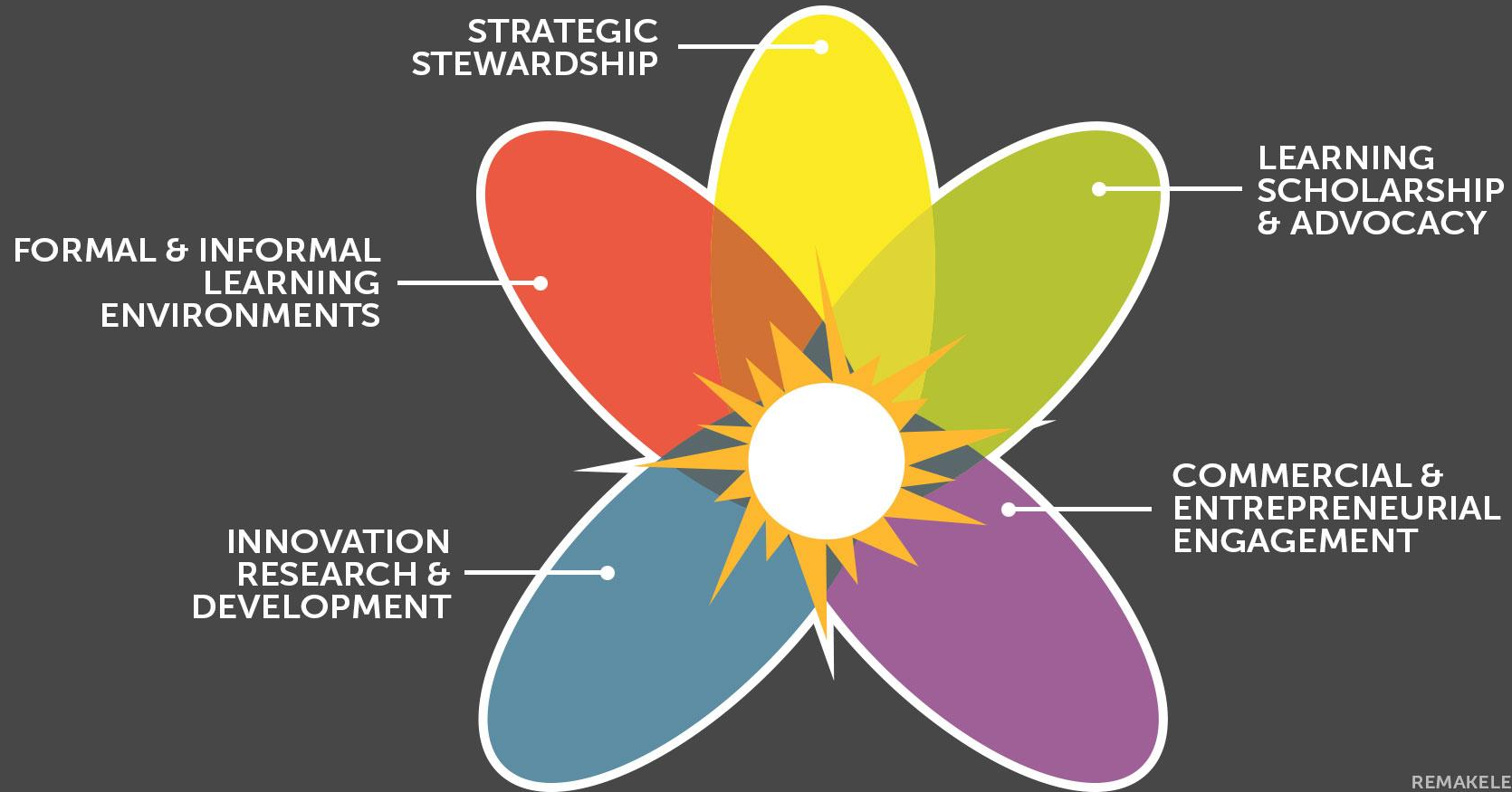
# THE **remake** **learning** NETWORK

Professional support  
network connecting  
educators & innovators  
in Pittsburgh, PA

Founded in 2007  
to build a model for  
21st century learning  
in the entire region

Supporting new and  
innovative learning  
experiences in schools  
and in the community

# THE REMAKE LEARNING NETWORK





# WHAT REMAKE LEARNING MEANS IN PITTSBURGH

---

Teachers & technologists working side-by-side

---

Learning scientists partnering with museums, libraries, and afterschool sites to enhance outcomes

---

Ed-tech startups co-design new products with students and teachers

---

More children have access to 21st century learning



REMAKELEARNING.ORG

# WHAT CAN WE LEARN FROM REMAKE LEARNING?



---

How can our community come together  
to remake learning?

---

How do we organize ourselves?

---

What do we need to get started?



REMAKELEARNING.ORG



# THE REMAKE LEARNING PLAYBOOK

---

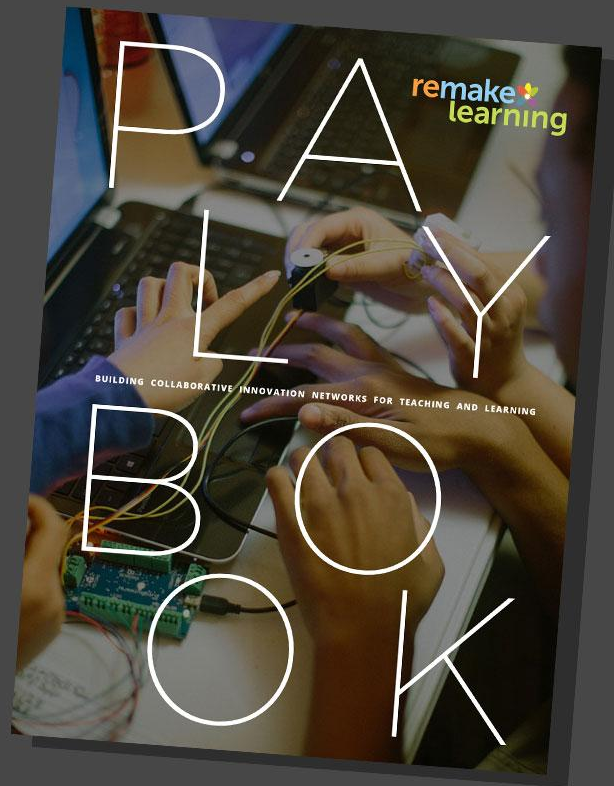
A model for structuring the network

---

Strategies & tactics for  
implementing learning innovation

---

Case studies of the network in action



remake   
learning

REMAKELEARNING.ORG

# STRATEGIES & STARTER IDEAS

Practical tips, tools, and tactics, including 31 plays to help us:



Convene our own network



Catalyze innovative projects in our community



Communicate with network members



Champion the network's accomplishments



Coordinate network members for idea-sharing and growing our reach



# OUR GAME PLAN: CONVENE

---

We can get started by convening our community

- <<Insert convene output from Gameplan web App>>
- <<Insert convene output from Gameplan web App>>

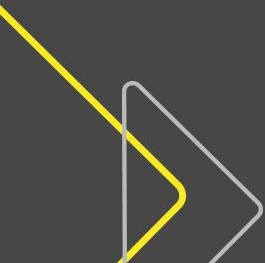
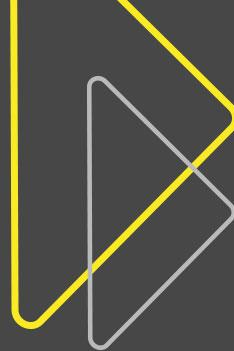


# OUR GAME PLAN: CATALYZE

---

We can get started by catalyzing local innovation

- <<Insert catalyze output from Gameplan web App>>
- <<Insert catalyze output from Gameplan web App>>



# OUR GAME PLAN: COMMUNICATE

---



We can get started by communicating as a network

- <<Insert communicate output from Gameplan web App>>
- <<Insert communicate output from Gameplan web App>>



# OUR GAME PLAN: CHAMPION

---

We can get started by championing learning innovation in our community

- <<Insert champion output from Gameplan web App>>
- <<Insert champion output from Gameplan web App>>



# OUR GAME PLAN: COORDIANTE

---

We can get started by coordinating a network strategy

- <<Insert coordinate output from Gameplan web App>>
- <<Insert coordinate output from Gameplan web App>>



# LET'S REMAKE LEARNING!

---

- <<Insert local call to action>>
- <<Insert local call to action>>
- <<Insert local call to action>>



**Have questions?**

Contact The Sprout Fund:

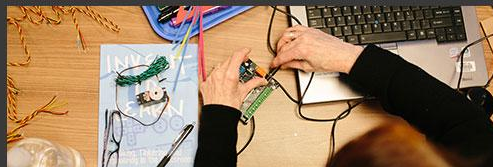
☎ 412.325.0646

✉ [Playbook@SproutFund.org](mailto:Playbook@SproutFund.org)

🐦 @sproutfund

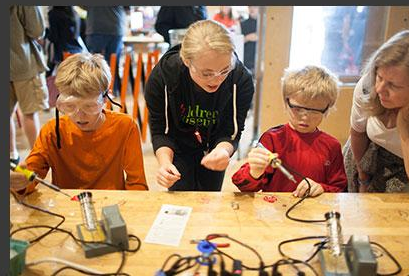
CONNECT WITH

remake   
learning



To learn more, visit  
**[Playbook.RemakeLearning.org](http://Playbook.RemakeLearning.org)**

Share local progress with  
**@remakelearning** on Twitter.







## CREDITS

---

Prepared by The Sprout Fund  
on behalf of the Remake Learning Network.

---

Funding for the Remake Learning Playbook  
was generously provided by The Grable Foundation.

---

This work by The Sprout Fund is licensed under a Creative Commons  
Attribution-NonCommercial-Share-Alike 4.0 International License.

---

**REMAKELEARNING.ORG**